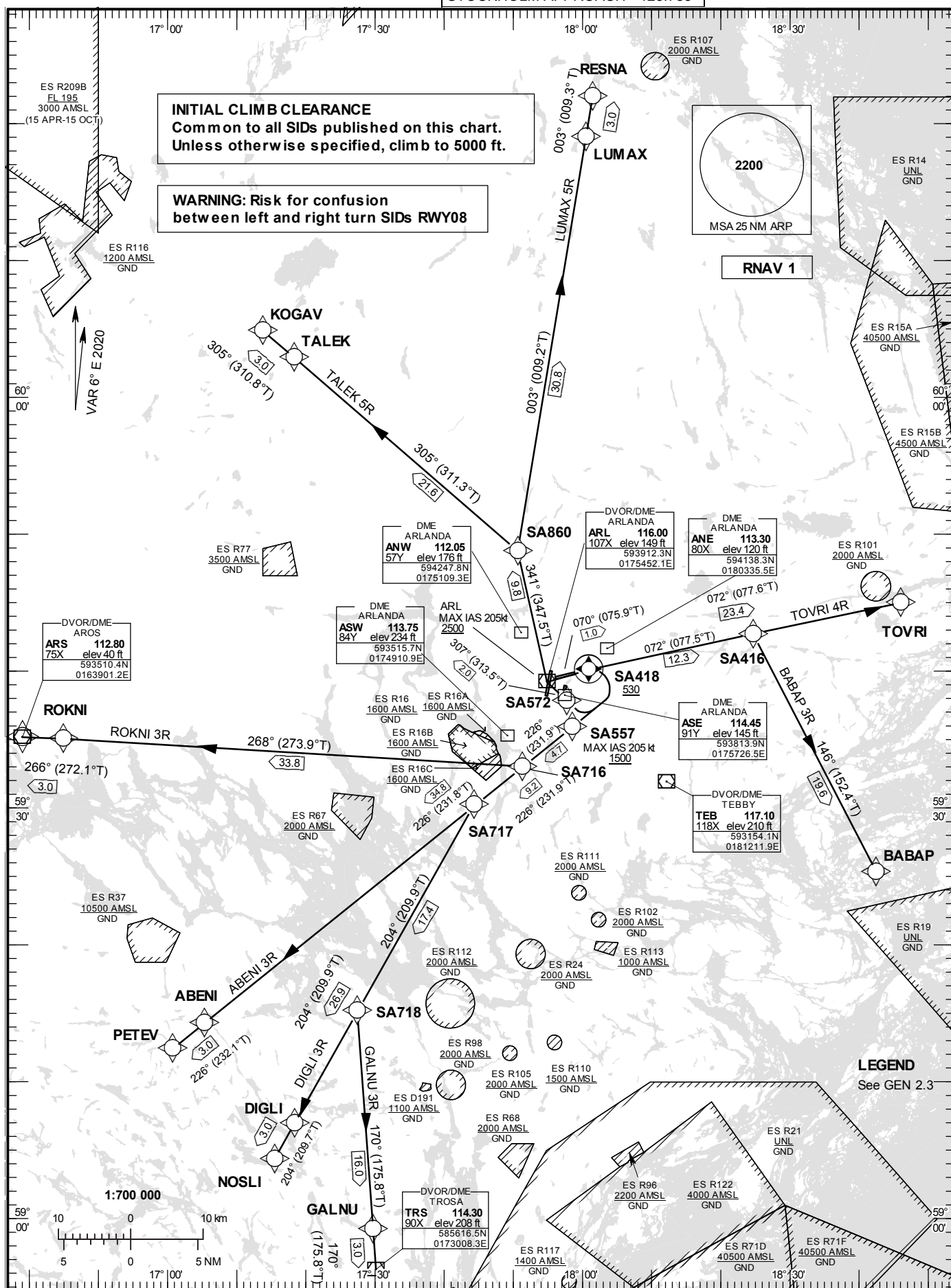


**STANDARD INSTRUMENT  
DEPARTURE CHART (SID) -  
ICAO**

HGT and ALT in ft  
BRG are MAG (True)  
TA 5000 ft AMSL

ARLANDA TOWER	128.730
ARLANDA ATIS DEP	121.630
STOCKHOLM APPROACH	123.755

**RNAV (DME/DME or GNSS)  
SID RWY 08 Right turn**



CHANGE: Editorial

STOCKHOLM/Arlanda

Prescribed Coding of RNAV SIDs for RWY 08 Right turn

REMARK

INITIAL CLIMB CLEARANCE: Climb to 5000 ft unless otherwise specified. Common to all RNAV SIDs published on charts.

Aircraft proceeding on RNAV SID shall use 400 ft per NM (6.6%) as a minimum gradient of climb up to 5000 ft AMSL. Aircraft unable to conform with this procedure shall inform ATS accordingly.

Aircraft from STOCKHOLM/Arlanda shall not be operated at an airspeed of more than 250 kt IAS below FL 100 unless otherwise instructed.

Contact Frequency: Contact STOCKHOLM DEPARTURE, when so instructed by TWR, on channel indicated below.

ABENI 3R

Path Term	Waypoint Identifier	Fly-over	Course °M(°T)	Dist (NM)	Turn Dir	Rest Alts (ft AMSL)	Speed Limits (kt)	VPA/ RDH (°/ft)	Rec Navaid	Navigation Specification
CF	SA418	Y	070°(075.9°)	1.0	-	+530	-	-	ARL	RNAV 1
DF	SA557	-	-	-	R	+1500	- 205	-	-	RNAV 1
TF	ABENI	-	226°(231.8°)	34.8	-	-	-	-	-	RNAV 1
TF	PETEV	-	226°(232.1°)	3.0	-	-	-	-	-	RNAV 1

SID instruction:

Climb on track 070° to SA418 (MNM 530 ft before turn) – SA557 (max IAS 205 kt until SA557) – ABENI – PETEV

124.105 MHz

ACFT unable to follow RNAV SID:

Report "unable RNAV SID due RNAV type" to Clearance Delivery and "unable RNAV SID" to Stockholm Departure at first contact.  
Climb on track 070° to ARL DME 3.2 (MNM 530 ft before turn). Turn right to track 226° (max IAS 205 kt until established on track 226°). Expect radar vectors to PETEV.

BABAP 3R

Path Term	Waypoint Identifier	Fly-over	Course °M(°T)	Dist (NM)	Turn Dir	Rest Alts (ft AMSL)	Speed Limits (kt)	VPA/ RDH (°/ft)	Rec Navaid	Navigation Specification
CF	SA418	Y	070°(075.9°)	1.0	-	+530	-	-	ARL	RNAV 1
TF	SA416	-	072°(077.5°)	12.3	-	-	-	-	-	RNAV 1
TF	BABAP	-	146°(152.4°)	19.6	R	-	-	-	-	RNAV 1

SID instruction:

Climb on track 070° to SA418 – SA416 – BABAP

130.330 MHz

ACFT unable to follow RNAV SID:

Report "unable RNAV SID due RNAV type" to Clearance Delivery and "unable RNAV SID" to Stockholm Departure at first contact.  
Climb on track 070°. Expect radar vectors to BABAP.

**STOCKHOLM/Arlanda****DIGLI 3R**

Path Term	Waypoint Identifier	Fly-over	Course °M(°T)	Dist (NM)	Turn Dir	Rest Alts (ft AMSL)	Speed Limits (kt)	VPA/ RDH (°/ft)	Rec Navaid	Navigation Specification
CF	SA418	Y	070°(075.9°)	1.0	-	+ 530	-	-	ARL	RNAV 1
DF	SA557	-	-	-	R	+1500	- 205	-	-	RNAV 1
TF	SA717	-	226°(231.9°)	9.2	-	-	-	-	-	RNAV 1
TF	DIGLI	-	204°(209.9°)	26.9	-	-	-	-	-	RNAV 1
TF	NOSLI	-	204°(209.7°)	3.0	-	-	-	-	-	RNAV 1

SID instruction: Climb on track 070° to SA418 (MNM 530 ft before turn) – SA557 (max IAS 205 kt until SA557) – SA717 – DIGLI – NOSLI

**124.105 MHz**

ACFT unable to follow RNAV SID: Report "unable RNAV SID due RNAV type" to Clearance Delivery and "unable RNAV SID" to Stockholm Departure at first contact.  
Climb on track 070° to ARL DME 3.2 (MNM 530 ft before turn). Turn right to track 226° (max IAS 205 kt until established on track 226°). Expect radar vectors to NOSLI.

**GALNU 3R**

Path Term	Waypoint Identifier	Fly-over	Course °M(°T)	Dist (NM)	Turn Dir	Rest Alts (ft AMSL)	Speed Limits (kt)	VPA/ RDH (°/ft)	Rec Navaid	Navigation Specification
CF	SA418	Y	070°(075.9°)	1.0	-	+ 530	-	-	ARL	RNAV 1
DF	SA557	-	-	-	R	+1500	- 205	-	-	RNAV 1
TF	SA717	-	226°(231.9°)	9.2	-	-	-	-	-	RNAV 1
TF	SA718	-	204°(209.9°)	17.4	-	-	-	-	-	RNAV 1
TF	GALNU	-	170°(175.8°)	16.0	-	-	-	-	-	RNAV 1
TF	TRS	-	170°(175.8°)	3.0	-	-	-	-	-	RNAV 1

SID instruction: Climb on track 070° to SA418 (MNM 530 ft before turn) – SA557 (max IAS 205 kt until SA557) – SA717 – SA718 – GALNU – TRS

**124.105 MHz**

ACFT unable to follow RNAV SID: Report "unable RNAV SID due RNAV type" to Clearance Delivery and "unable RNAV SID" to Stockholm Departure at first contact.  
Climb on track 070° to ARL DME 3.2 (MNM 530 ft before turn). Turn right to track 226° (max IAS 205 kt until established on track 226°). Expect radar vectors to TRS.

**LUMAX 5R**

Path Term	Waypoint Identifier	Fly-over	Course °M(°T)	Dist (NM)	Turn Dir	Rest Alts (ft AMSL)	Speed Limits (kt)	VPA/ RDH (°/ft)	Rec Navaid	Navigation Specification
CF	SA418	Y	070°(075.9°)	1.0	-	-	-	-	ARL	RNAV 1
CA	-	-	070°(075.9°)	-	-	+530	-	-	-	RNAV 1
DF	SA572	-	-	-	R	-	-	-	-	RNAV 1
TF	ARL	-	307°(313.5°)	2.0	-	+2500	- 205	-	-	RNAV 1
TF	SA860	-	341°(347.5°)	9.8	-	-	-	-	-	RNAV 1
TF	LUMAX	-	003°(009.2°)	30.8	-	-	-	-	-	RNAV 1
TF	RESNA	-	003°(009.3°)	3.0	-	-	-	-	-	RNAV 1

SID instruction: Climb to SA418 on course 070° and MNM 530 ft before turn. Turn right to SA572 – ARL (MNM 2500 ft, max IAS 205 kt until ARL) – SA860 – LUMAX – RESNA

**124.105 MHz**

ACFT unable to follow RNAV SID: Report "unable RNAV SID due RNAV type" to Clearance Delivery and "unable RNAV SID" to Stockholm Departure at first contact.  
Climb on track 070° to ARL DME 3.2 (MNM 530 ft before turn). Turn right to track 258°. Intercept ARL R-127 and proceed to ARL (MNM 2500 ft and max IAS 205 kt until ARL). Turn right to track 340°. Expect radar vectors to RESNA.

**STOCKHOLM/Arlanda****ROKNI 3R**

Path Term	Waypoint Identifier	Fly-over	Course °M(°T)	Dist (NM)	Turn Dir	Rest Alts (ft AMSL)	Speed Limits (kt)	VPA/ RDH (°/ft)	Rec Navaid	Navigation Specification
CF	SA418	Y	070°(075.9°)	1.0		+530	-	-	ARL	RNAV 1
DF	SA557	-			R	+1500	-205	-	-	RNAV 1
TF	SA716	-	226°(231.9°)	4.7			-	-	-	RNAV 1
TF	ROKNI	-	268°(273.9°)	33.8	R		-	-	-	RNAV 1
TF	ARS	-	266°(272.1°)	3.0			-	-	-	RNAV 1

SID instruction: Climb on track 070° to SA418 (MNM 530 ft before turn) – SA557 (max IAS 205 kt until SA557) – SA716 – ROKNI - ARS **124.105 MHz**

ACFT unable to follow RNAV SID: Report "unable RNAV SID due RNAV type" to Clearance Delivery and "unable RNAV SID" to Stockholm Departure at first contact.  
Climb on track 070° to ARL DME 3.2 (MNM 530 ft before turn). Turn right to track 226° (max IAS 205 kt until established on track 226°). Expect radar vectors to ARS.

**TALEK 5R**

Path Term	Waypoint Identifier	Fly-over	Course °M(°T)	Dist (NM)	Turn Dir	Rest Alts (ft AMSL)	Speed Limits (kt)	VPA/ RDH (°/ft)	Rec Navaid	Navigation Specification
CF	SA418	Y	070°(075.9°)	1.0	-	-	-	-	ARL	RNAV 1
CA	-	-	070°(075.9°)	-	-	+530	-	-	-	RNAV 1
DF	SA572	-	-	-	R	-	-	-	-	RNAV 1
TF	ARL	-	307°(313.5°)	2.0	-	+2500	-205	-	-	RNAV 1
TF	SA860	-	341°(347.5°)	9.8	-	-	-	-	-	RNAV 1
TF	TALEK	-	305°(311.3°)	21.6	-	-	-	-	-	RNAV 1
TF	KOGAV	-	305°(310.8°)	3.0	-	-	-	-	-	RNAV 1

SID instruction: Climb to SA418 on course 070° and MNM 530 ft before turn. Turn right direct to SA572 – ARL (MNM 2500 ft, max IAS 205 kt until ARL) – SA860 – TALEK – KOGAV **124.105 MHz**

ACFT unable to follow RNAV SID: Report "unable RNAV SID due RNAV type" to Clearance Delivery and "unable RNAV SID" to Stockholm Departure at first contact.  
Climb on track 070° to ARL DME 3.2 (MNM 530 ft before turn). Turn right to track 258°. Intercept ARL R-127 and proceed to ARL (MNM 2500 ft and max IAS 205 kt until ARL). Turn right to track 340°. Expect radar vectors to KOGAV.

**TOVRI 4R**

Path Term	Waypoint Identifier	Fly-over	Course °M(°T)	Dist (NM)	Turn Dir	Rest Alts (ft AMSL)	Speed Limits (kt)	VPA/ RDH (°/ft)	Rec Navaid	Navigation Specification
CF	SA418	Y	070°(075.9°)	1.0	-	+530	-	-	ARL	RNAV 1
TF	TOVRI	-	072°(077.6°)	23.4	-	-	-	-	-	RNAV 1

SID instruction: Climb on track 070° to SA418 – TOVRI **130.330 MHz**

ACFT unable to follow RNAV SID: Report "unable RNAV SID due RNAV type" to Clearance Delivery and "unable RNAV SID" to Stockholm Departure at first contact.  
Climb on track 070°. Expect radar vectors to TOVRI.